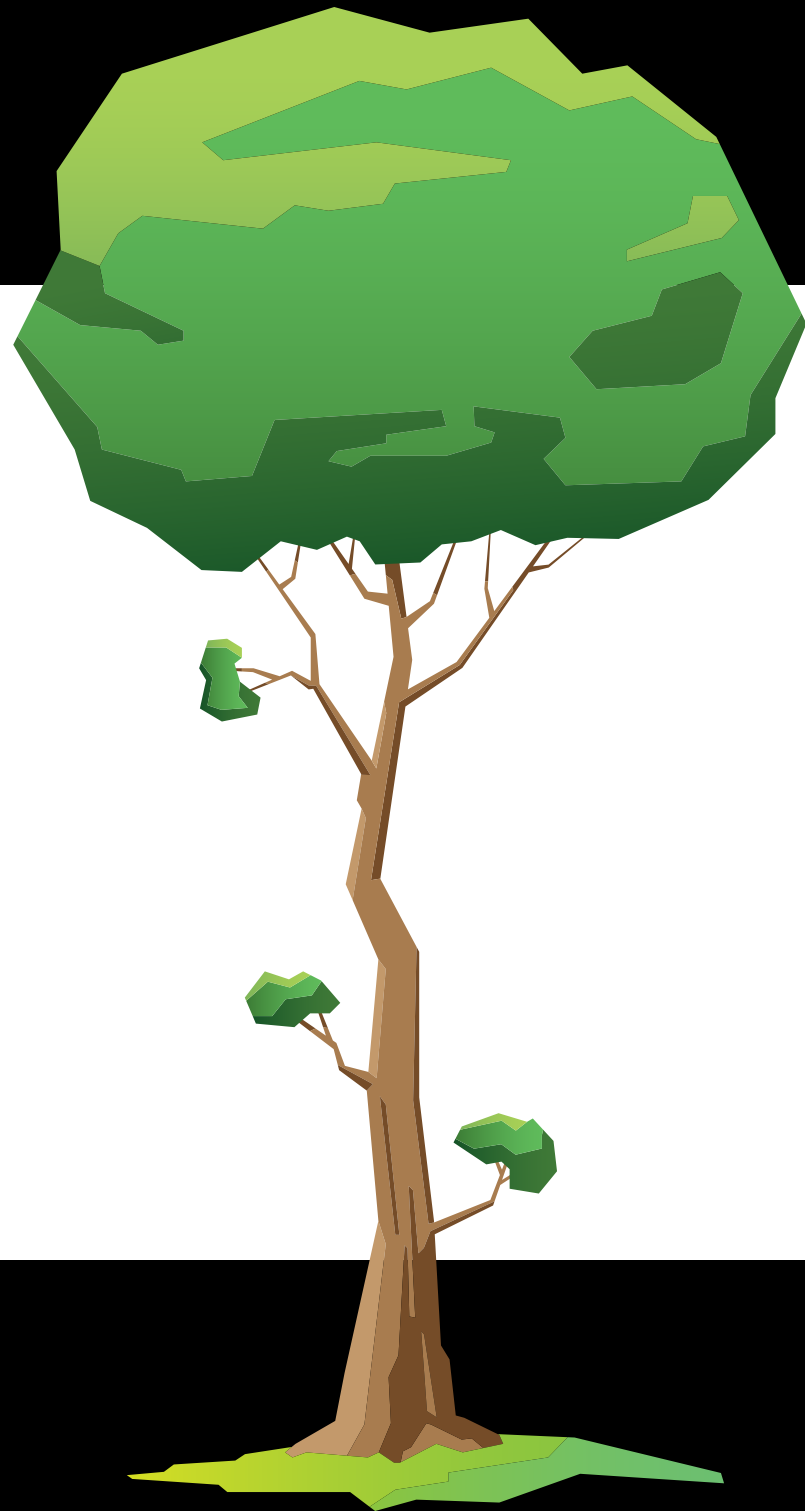


Where does the wood go?



76% is wasted
(60% at harvest, 16% during processing)



20% ends up as paper products
(life span of 1-3 years)



4% ends up as sawn timber
(lifespan of 30-90 years)



Note: these calculations are relevant to the mountain ash forests of Victoria.
Source: Keith et. al. 2014. Managing temperate forests for carbon storage: impacts of logging versus forest protection on carbon stocks. Ecosphere Vol. 5. <http://bit.ly/2oFPUIQ>

